



1. The three states of matter are

- A. Solid, Liquid, Ice.
- B. Liquid, Gas, Air.
- C. Gas, Liquid, Solid.
- D. Solid, Ice, Steam

(1)

2. A gas can be squeezed together because there is lots of space between its particles.
This is called

- A. Compression.
- B. Expansion.
- C. Diffusion.
- D. Evaporation.

(1)

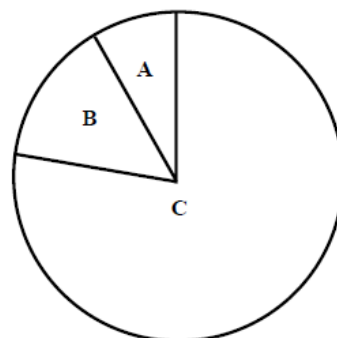
3. The pie chart gives information about limestone which is quarried in the UK.

80% is used as construction materials.

12% is made into cement.

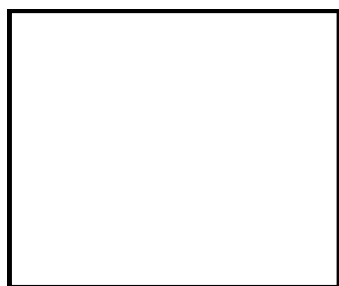
8% is used in other industries.

Identify what section A represents.



(1)

4. Complete the following diagrams to show how the particles are arranged in a solid, liquid and gas.



Solid



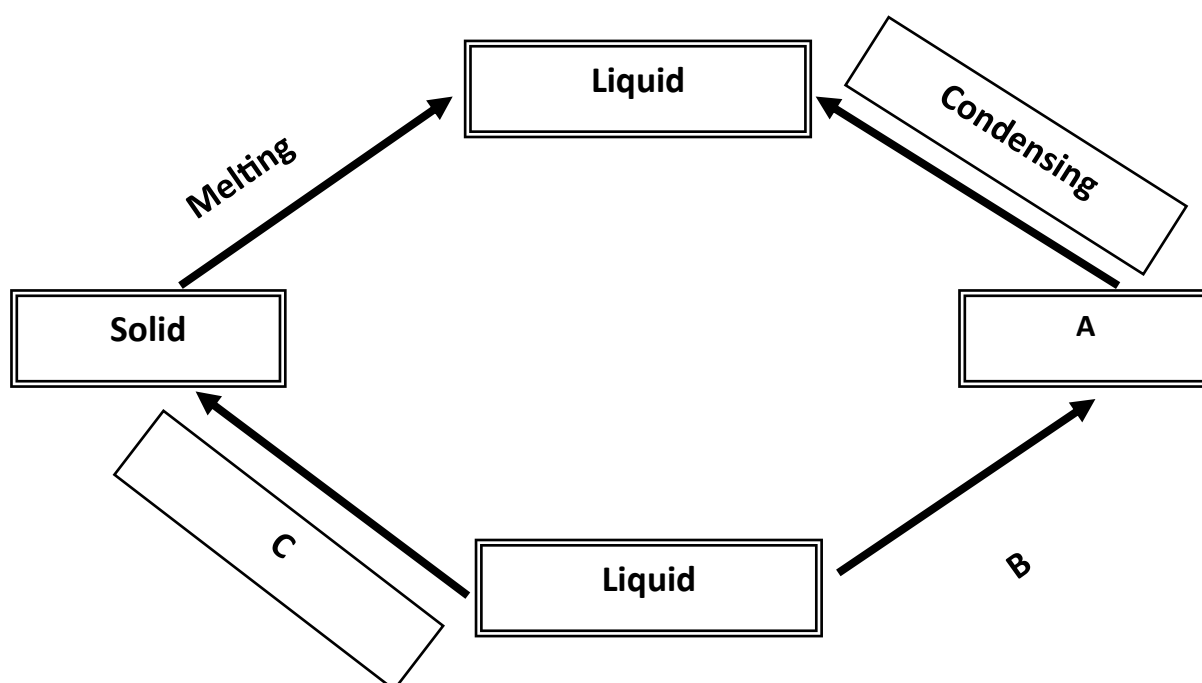
Liquid



Gas

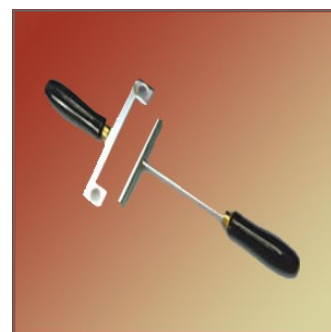
(3)

5. Complete the diagram on changing the state of matter.



(3)

6. The diagram shows a metal bar fitting into a gauge. Explain why the bar will not fit into the gauge after being heated in a Bunsen burner.



(1)