

## BGE Electricity Homework 1

1. State what is meant by the following terms:

a) Electrical current

---

---

b) Voltage

---

---

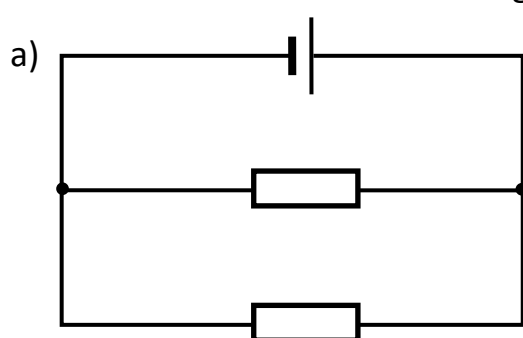
(2)

2. When drawing circuit diagrams we can use symbols for the different components that make up the circuit. **Using a ruler**, complete the table below to show the circuit symbols for the 4 components listed, as well as stating their function.

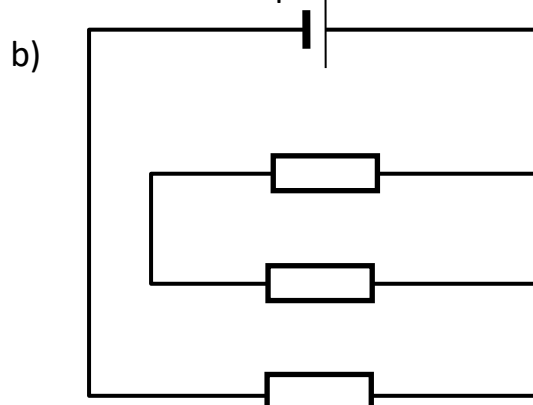
Component	Symbol	Function
Battery		
Lamp		
LED		
Ammeter		

(8)

3. State whether the following circuits are series or parallel.



\_\_\_\_\_

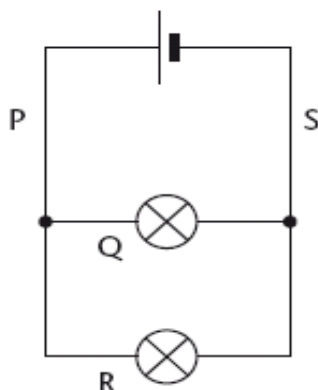


\_\_\_\_\_

(2)

4. The following circuit contains two identical bulbs.

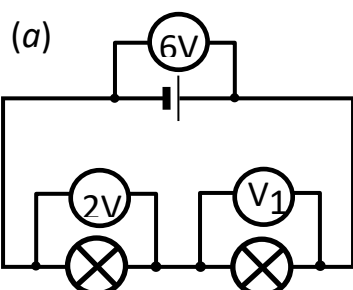
Which of the statements below is **false**?



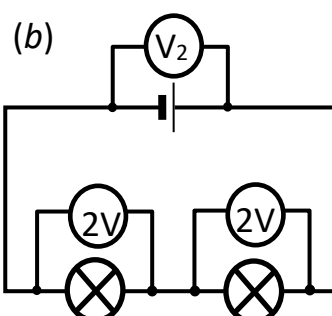
- A The current at Q and R add up to give the current at S
- B The current is the same at Q and R
- C The current is the same at P and Q
- D The current is the same at P and S

Answer: \_\_\_\_\_ (1)

5. Look at the series circuits below. For each one, state the value of the voltage on the voltmeters labelled V1 and V2.



Answer: \_\_\_\_\_



Answer: \_\_\_\_\_

(2)