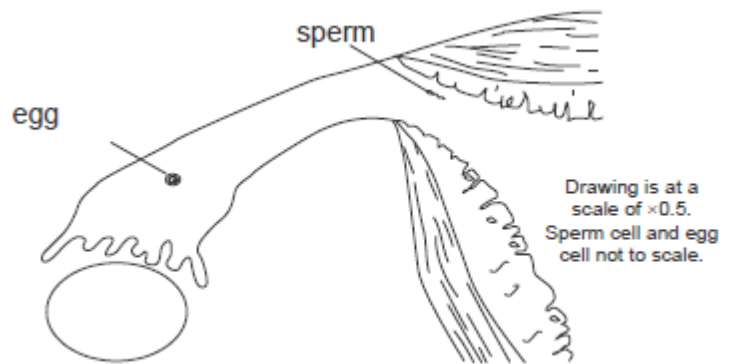


Cells and Reproduction Homework 2

1. a. Place an **X** on the diagram to show where **fertilisation** occurs.
- b. Place a **Y** on the diagram to show where **implantation** occurs.



(2)

2. a. Name the part of the body where the embryo implants and grows into a baby.

(1)

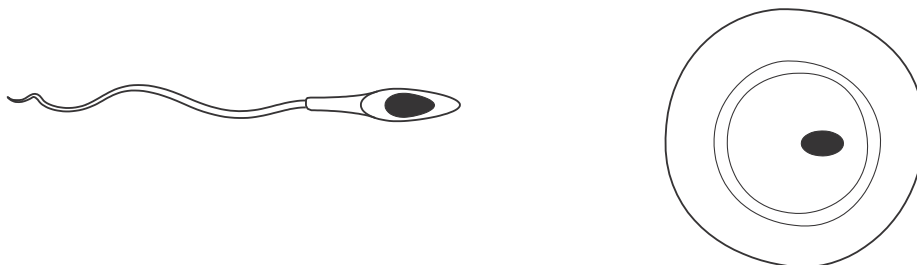
- b. The fertilised egg cell turns into an embryo by cell division. Draw TWO more diagrams to show what happens in the first two cell divisions.

Fertilised egg



(2)

3. a) The nucleus of the egg cell contains half the instructions about how a new animal will look. The nucleus of the sperm cell contains the other half of the instructions. On the diagram below, label the nucleus in the sperm cell and the nucleus of the egg cell.



(1)

3 b) Complete the following sentence:

Fertilisation is _____

(1)

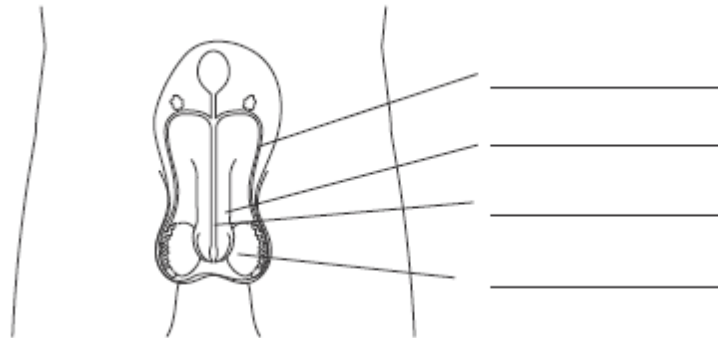
4. Which of these sentences about human reproduction are correct? Tick ALL the correct answers.

- ☐ The sperm cell and the egg cell fuse inside the oviduct.
- ☐ The sperm cell and the egg cell fuse inside the sperm duct.
- ☐ The fertilised egg cell divides into two.
- ☐ A ball of cells that will grow into a baby is called an embryo.
- ☐ The embryo grows inside the uterus.
- ☐ The embryo grows inside the ovary.

(2)

- 5a. Label the parts on the diagram of the male reproductive system using the words in the box.

penis	sperm duct	testes	urethra
-------	------------	--------	---------



(2)

- b. Now complete the following sentences using the same words from the box:

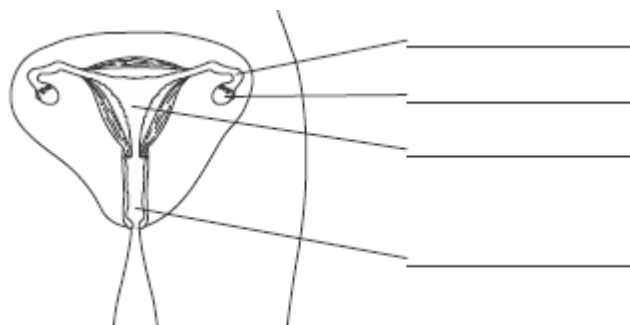
Sperm cells are made in the _____

The tubes through which sperm cells travel when leaving the body are the _____ and the _____

(3)

- 6a. Label the parts on the diagram of the female reproductive system using the words in the box.

oviduct	ovary	uterus	vagina
---------	-------	--------	--------



(2)

b. Now complete the following sentences using the same words from the box:

The egg cells are released from the _____

Egg cells travel down the _____ on their way to the uterus.

(1)

7. Draw lines to match the questions with the correct answer.

In what female organ does a developing baby grow?	bag of fluid
What attaches the placenta to the baby?	carbon dioxide
Give an example of a waste material the baby makes.	cord
What is the name of the male sex cell?	oviduct
Where does fertilisation take place?	placenta
What gas from the air does the baby get from its mother?	oxygen
What is the baby surrounded and protected by?	sperm cell
What puts waste from the baby into the mother's blood?	uterus

(4)

8. If a pregnant woman drinks beer or wine, some of the alcohol passes to the unborn baby. Alcohol can stop the baby's brain developing properly.

Join the boxes with **three arrows** to show the path taken by the alcohol.

(1)

